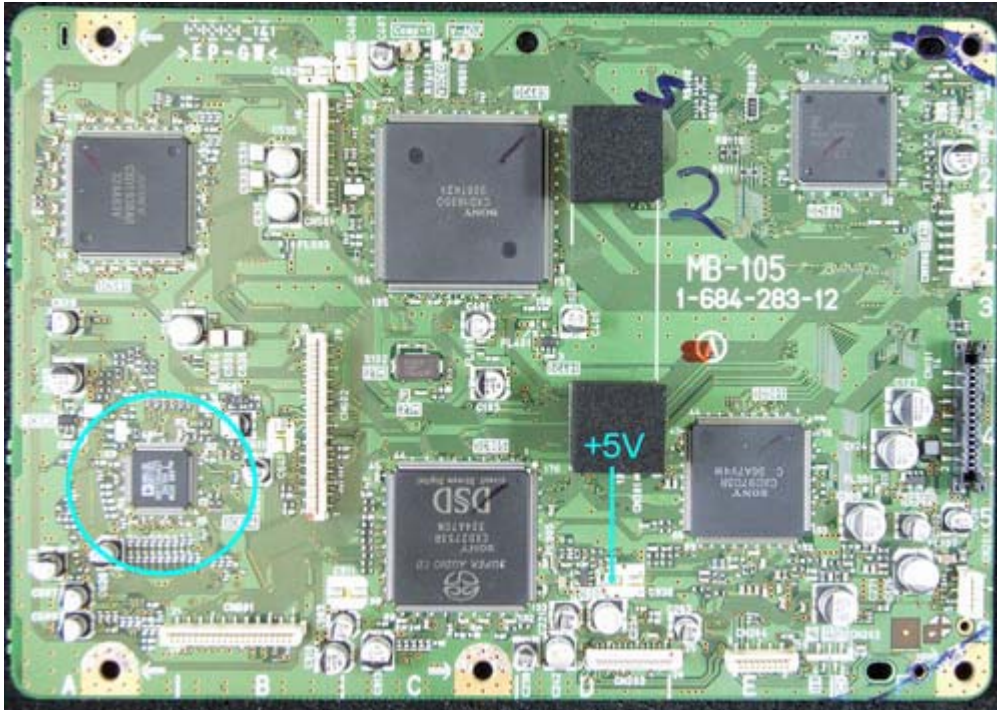
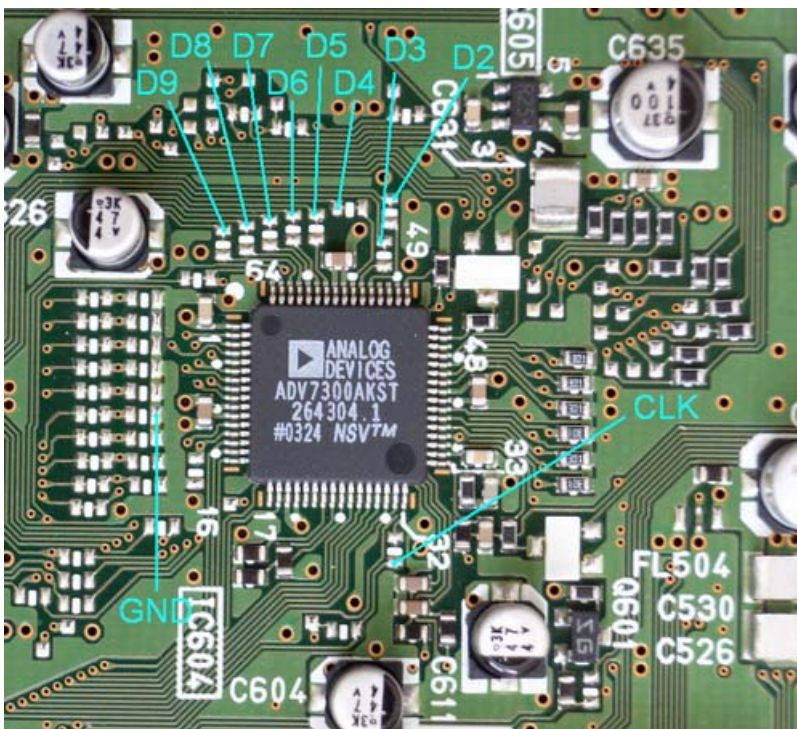


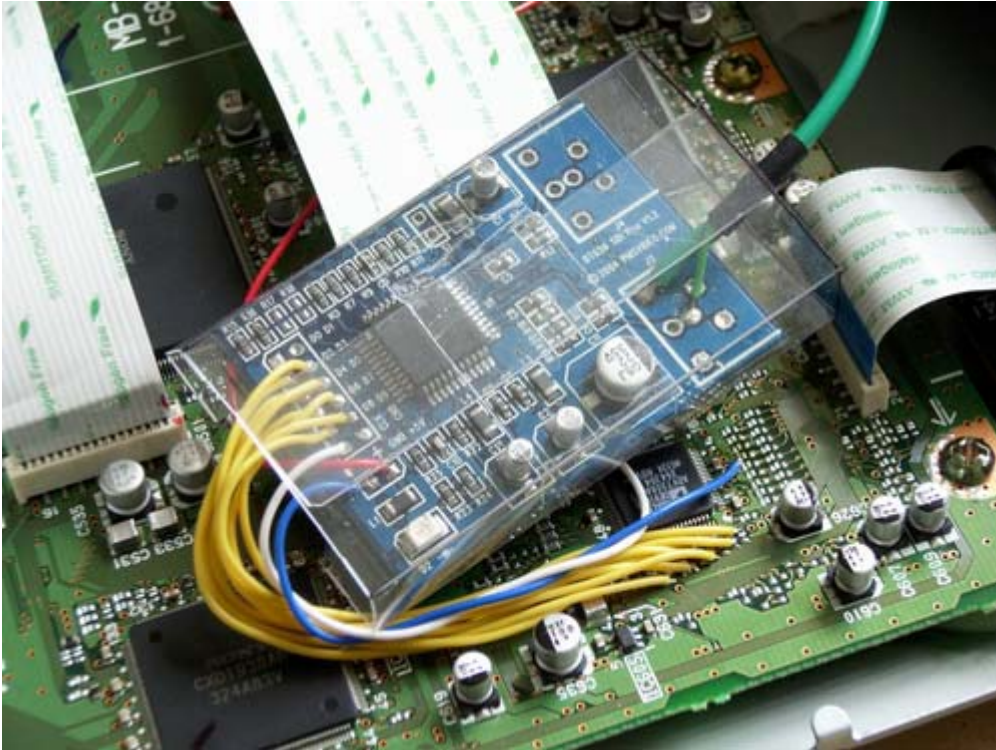
Here are the details of my recently completed modification of a Sony DVP-NS930V DVD player (should also apply to DVP-NS905V - uses same main board).



MB-105 main board showing where to connect +5V. Circled chip is Analog Devices video DAC.



Closeup of video DAC showing where to connect data, clock and ground.



SDI board wired in and insulated in transparent plastic.

Yellow wires - data

White wire - clock

Blue wire - ground

Green cable - SDI output



Rear panel view.