

Crystalio® Firmware Upgrade Instruction
By PMS Video Ltd

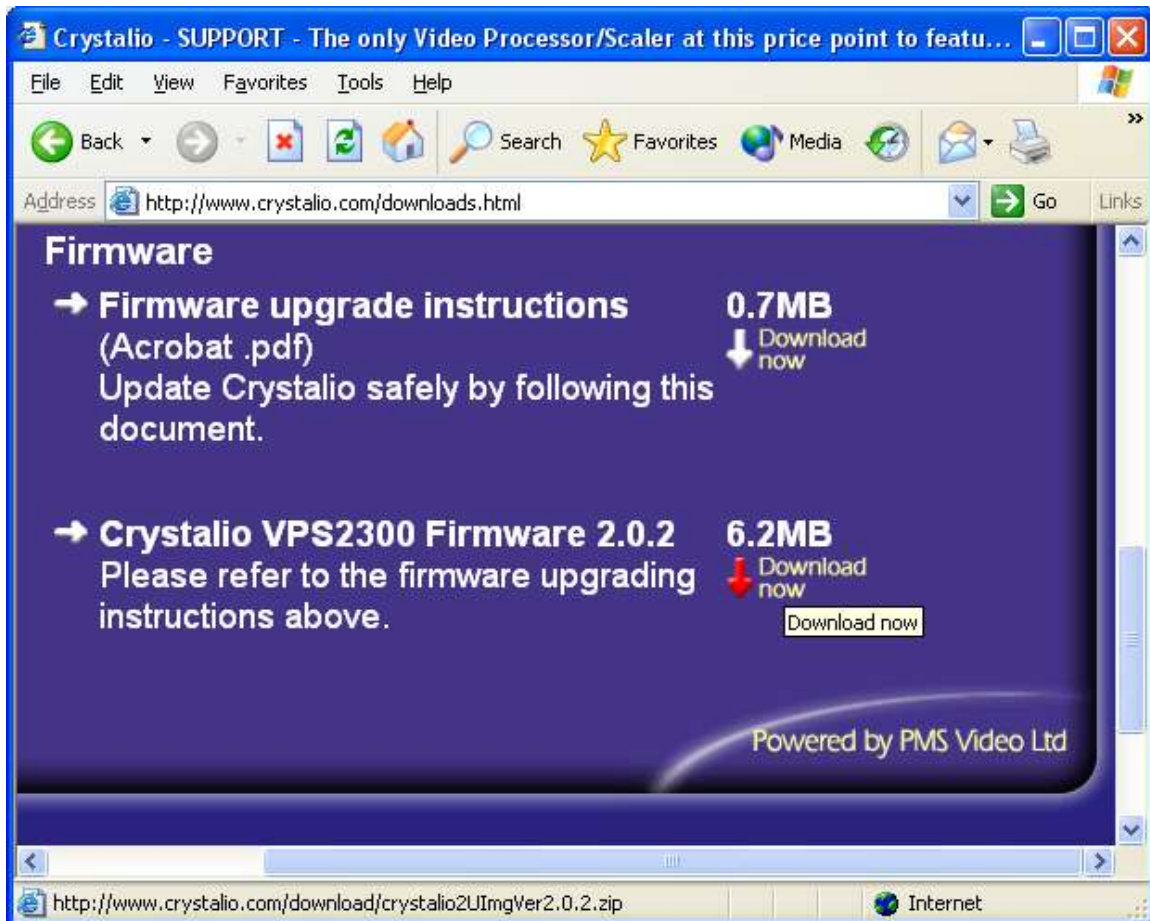
Crystalio® Firmware Upgrade document v1.3

A. DOWNLOAD Section:

(1) Go to Crystalio Homepage

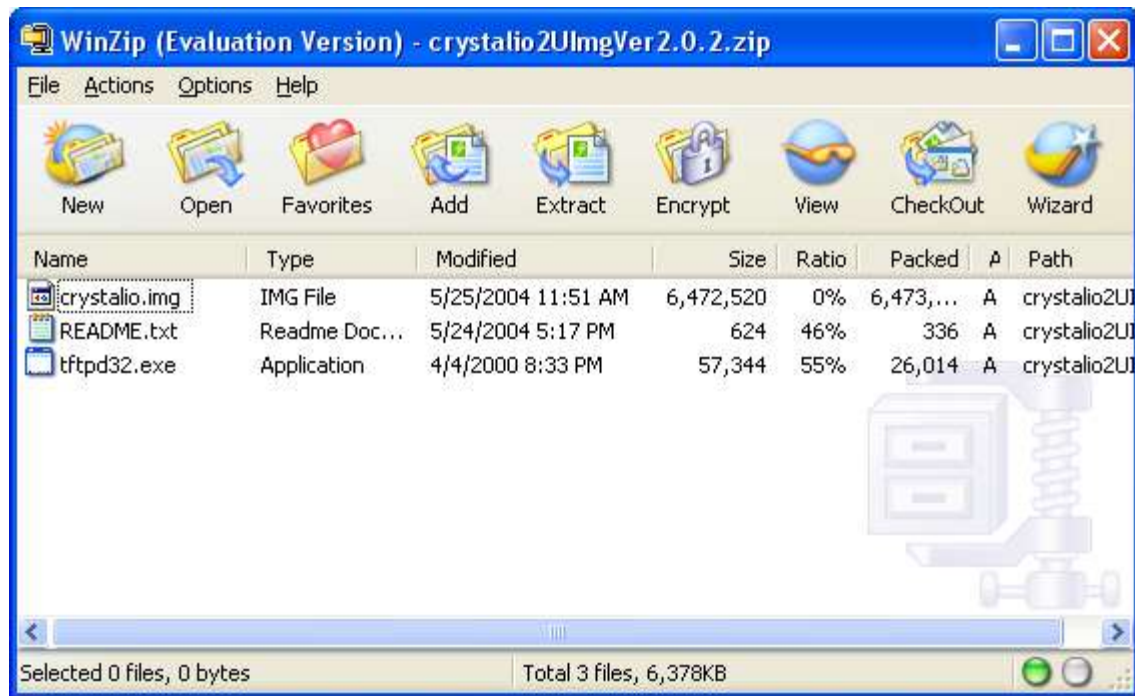
<http://www.crystalio.com>

(2) Click “Support” -> “Downloads”



(3) Download the latest Crystalio VPS2300 firmware into your computer

(4) Unzip the zip file



B. Network connection:

(5) Prepare a crossed network cable to connect between Crystalio and your personal computer



(6) Change the network connection

In Window XP

Press [Start] -> [Settings] -> [Network Connections]

Right click the "Local Area Connection x", x is the network interface card (NIC) which the Crystalio connected to.

Select "Properties"

In the "Local Area Connection Properties", choose "Internet Protocol(TCP/IP)"

Select "Properties" button

In the "Internet Protocol (TCP/IP) Properties", select "Use the following IP address"

Enter the following information:

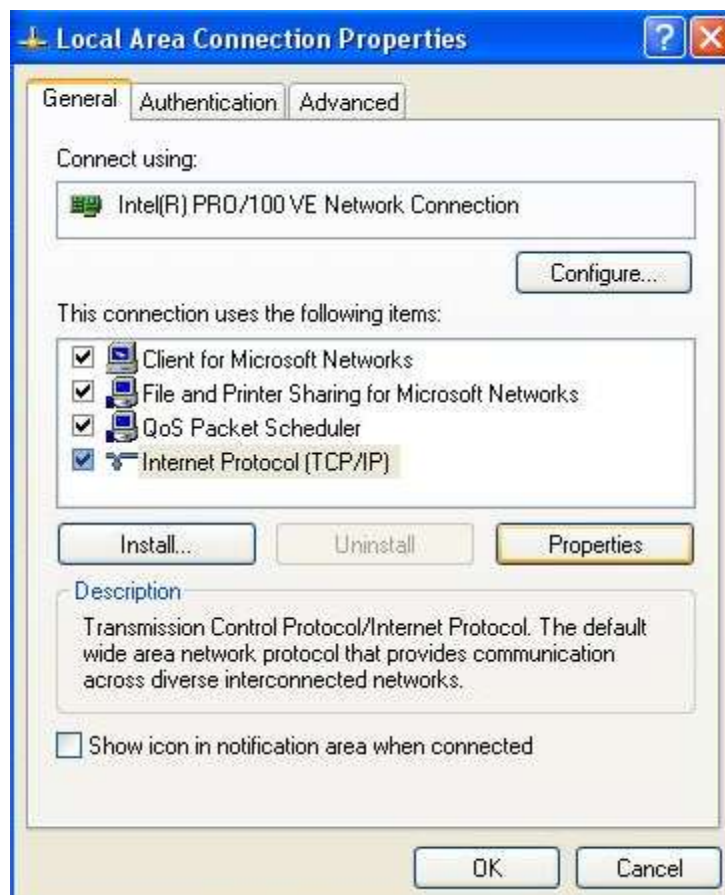
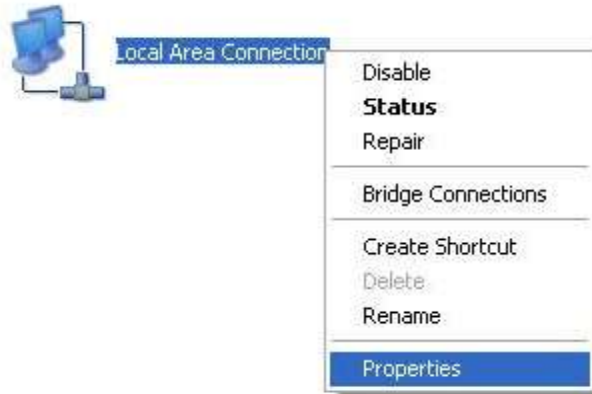
IP address: 192.168.0.251

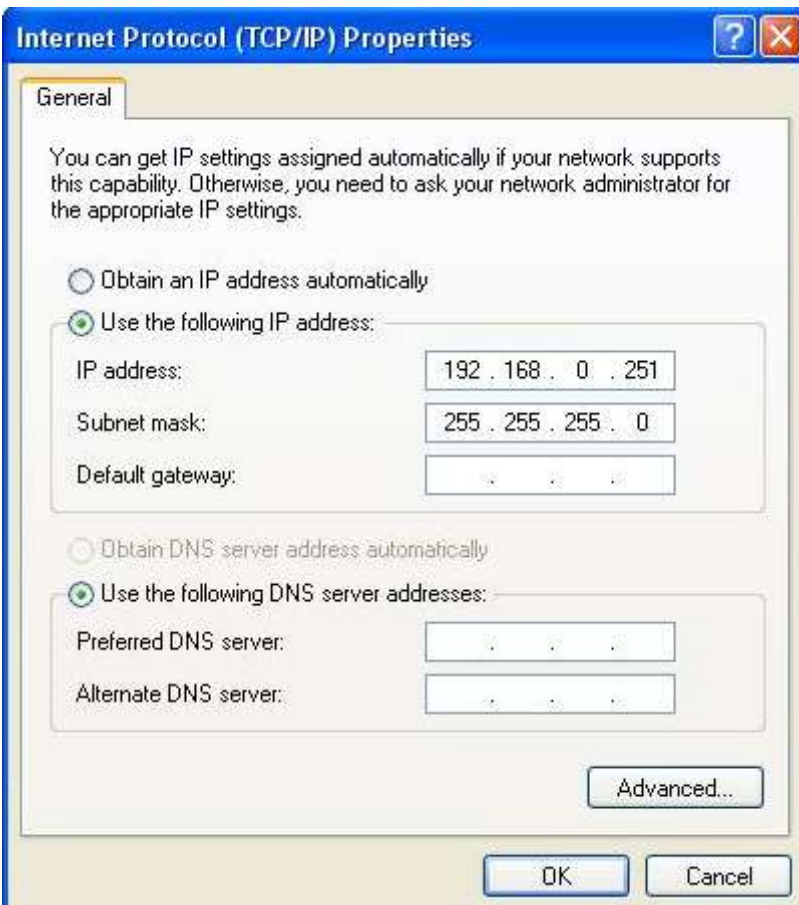
Subnet mask: 255.255.255.0

Press "OK" to confirm

Press "OK" to exit the "Local Area Connection Properties" dialog







C. Firmware upgrade:

- (7) Go to the Crystalio firmware upgrade unzipped folder
- (8) Run "tftpd32.exe"
- (9) Make sure that the Base Directory is pointing to the current folder
- (10) Select Server interface to "192.168.0.251"
- (11) Turn on Crystalio VPS 2300
- (12) Press "SETUP" in Crystalio LCD Menu screen to enter setup mode
- (13) Select [Advance] -> [Firmware Upgd] -> [Confirm]
- (14) Now, the Crystalio VPS 2300 will connect to server and do the firmware upgrade
- (15) After success, press [OK] to reboot
- (16) Now, the Crystalio is using the latest firmware!

